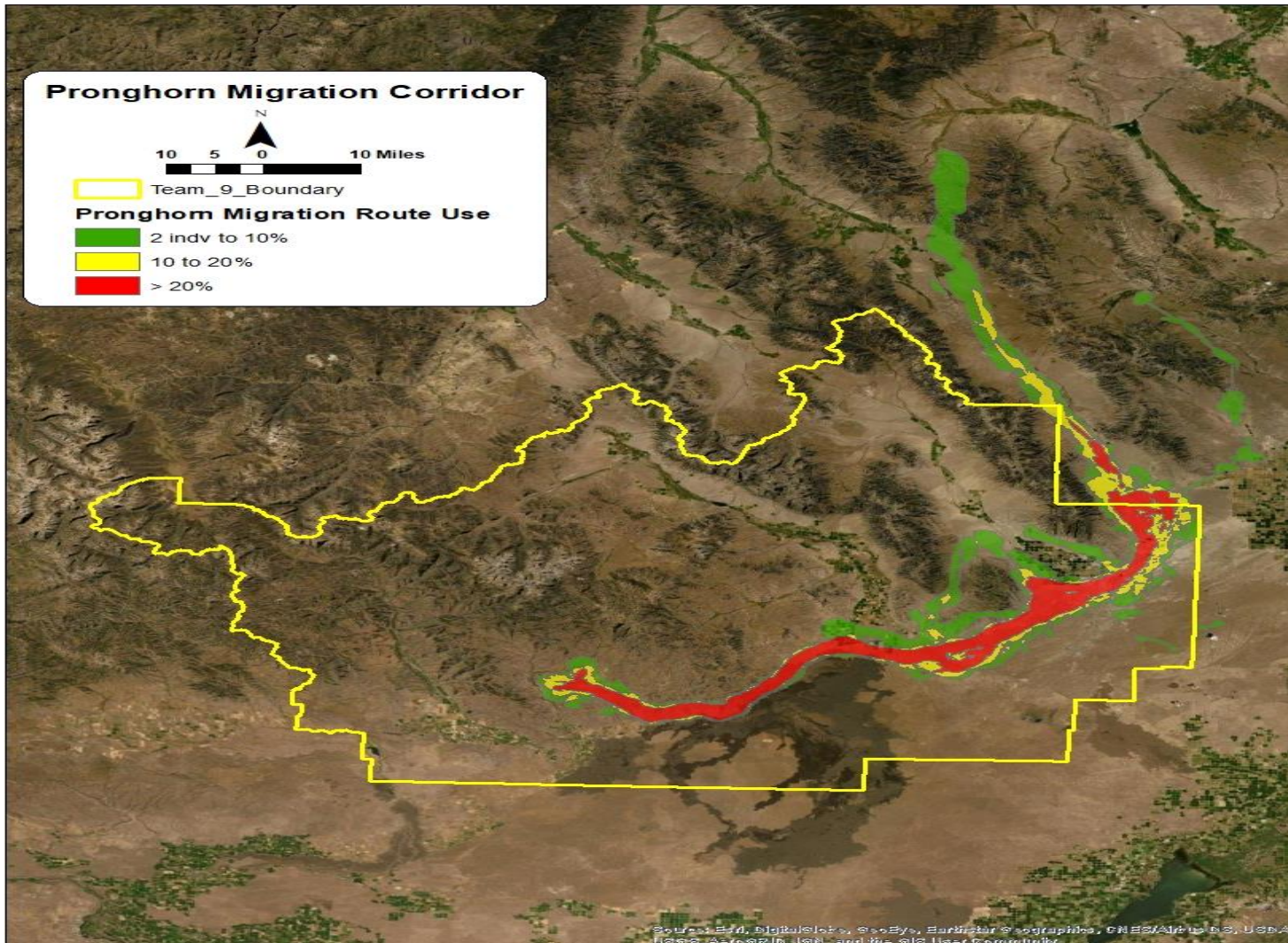


Landowner Eligibility:

While any landowner within the two-District boundary may apply, priority will be given to those located within the antelope migration corridor shown on the map below.

Technical and Financial Assistance Available!

Interested landowners can receive technical assistance from the NRCS, IDFG, and the USFWS. Financial assistance will be provided on a cost-sharing basis by the NRCS and IDFG. Fence removal labor will be provided at no cost by the USFWS and IDFG.



Open House Public Meeting!

A public meeting will be held to visit with landowners who are interested in participating in this project.

Bottolfsen Park, Arco

August 25th, 2021

12:00 P.M. – lunch

provided

Please R.S.V.P. by August 23rd by calling 208-527-8557, ext. 101

Project Overview:

The Butte SWCD and Blaine SCD have partnered with the Natural Resources Conservation Service (NRCS), Idaho Department of Fish and Game (IDFG), Bureau of Land Management (BLM), and the U.S. Fish and Wildlife Service (USFWS) to rehabilitate/retrofit and/or remove livestock fence within the antelope migration corridor in Butte and Blaine Counties.

Project Goals:

Work with landowners in the antelope migration corridor to retrofit fences to be wildlife friendly, create crossings, and/or remove fence to allow antelope to move freely through their established migration corridor. This project will;

- Reduce mortality and injuries caused by fence entanglements
- Potentially shorten the amount of time antelope spend grazing in one location along the corridor
- Reduce antelope/vehicle collisions along roadways



Photos from The Nature Conservancy

For more information, contact:

USDA-NRCS, Arco

208-527-8557

Butte SWCD and Blaine SCD's

Antelope Migration Corridor Fence Retrofit and Removal Project

2022

